



JHARKHAND Rai University

RANCHI



PROSPECTUS

"Our goal is not to make students just work-ready but also good human beings."



www.jru.edu.in



INDEX

Welcome To Jharkhand Rai University	02
Message from the Chancellor	03
Message from the Vice Chancellor	04
Recognition & Accreditation	05
Awards and Achievements	06 - 07
Infrastructure and Facilities	08 - 10
Placement Overview	11
Glimpses of Convocation	12
Programs Offered	13
Teaching Pedagogy	14
Digital Initiatives	15
Learning Beyond Classroom	16 - 17
Cultural Activities	18 - 19
Students' Clubs	20

Welcome to Jharkhand Rai University

Are you prepared to nurture yourself to face the reality of today's workplace? Are you ready to be trained by experienced professors from the industry experience? Can you be 'the graduate' that every employer wants to hire? Then you are at the right place. Welcome to Jharkhand Rai University.

JRU has career oriented programs that prepare you to meet the real-world needs of the industries. We provide each student an opportunity that helps them achieve their academic goals. Here on campus, there's a career path for everyone. Find yours at Jharkhand Rai University.



Once you start your college journey at JRU, you will be constantly guided by mentors, professors and faculties, who will support you at every step like guiding stars. A strong mentorship program is the hallmark of JRU campus.

Jharkhand Rai University (JRU) has been established under "Jharkhand Rai University Act, 2011" by Jharkhand State Legislature as per section 2(f) of UGC Act 1956. JRU is also a member of Association of Indian Universities (AIU), Association of Commonwealth Universities – London and an ISO certified University, (ISO 9001:2015). The University aims to create a knowledge pool for the State of Jharkhand by serving the needs of diverse communities. JRU continuously strives to provide quality education to its students through dynamic research, rigorous training and efficient mentorship. The University offers Diplomas, Undergraduate Degrees, Postgraduate Degrees and Doctoral Programs in different disciplines. JRU is the only private University in the state of Jharkhand approved by NAAC.

At JRU, research and innovation are integral to our goals. This encourages our faculty and students to carry on research in their respective areas of interest. With a focus on solving the needs of local, national and global interests, our research undertakings are interdisciplinary, collaborative and community based.

The spirit of innovation, modernization and student centric teaching – learning approach blended with strong Mentorship Program is the cornerstone of academics at Jharkhand Rai University. The focus on building skills, value-system and character are integral part of Jharkhand Rai University academic system. The University focuses on holistic education ecosystem, where the goal is not to make students just work-ready but also good human beings.

We are a vibrant community with a focus on nurturing talent so that every student becomes a leader, pioneer and a trailblazer. Our endeavour is to provide the best possible environment for our students. Hence, we are committed to the cause of making higher education accessible to all irrespective of caste, colour and creed.

Be a part of the BEST. Be a JRUian.

Message from the Chancellor



Since its founding in 2012, Jharkhand Rai University has grown to become a flagship, research-led university, known for the excellence of its teaching, its research, and its service to local communities.

Today, thousands of our students are making us proud by carrying the torch of leadership in every field and industry. As we look to the future one thing is certain – a youth empowered with knowledge and skills will be a key resource and will be highly sought-after across all industries. Hence, our goal over the years has been to make quality education accessible to all.

We enable our students with skills that will benefit society and train them to work in fields where they will be valued both for their specialised knowledge, and for their ability to research, communicate and solve problems.

To meet these challenges, we have built strong alliances and partnerships with business, government, and other research institutions. This helps us to ensure the on-going relevance of our academic programmes.

It is time for you to become a part of JRU's history, teaching and research strengths. A vibrant campus awaits you. We look forward to welcoming you to Jharkhand Rai University.

Today we need more than ever global leadership to solve some of the most pressing problems at scale. Only with collective effort, global vision and youth leadership can we address these issues such as poverty eradication, zero hunger, climate change and gender inequality. We need each one of us, each one of you to be an advocate and role model for change.

Together we can.

Best Regards,

Dr. Harbeen Arora Rai
Chancellor

Message from the Vice Chancellor



Welcome to Jharkhand Rai University where a strong team of educators constantly work to graduate the leaders of tomorrow. Here on JRU campus, we encourage students to ask questions, create new ideas, search for answers and research on new things.

We believe that young minds are dynamic, and that right kind of education is a powerful tool for growth.

Advancing quality education, teaching and learning are priorities for Jharkhand Rai University. Along with this, forging ahead our research mandate is strong part of our vision too. Underlining all these is our commitment to create opportunities for students and ensure a socially responsible approach. We're a strong, well-managed and responsible university with so much to offer our students, employees, the community and beyond.

As always, we continue our journey with all the important activities and our new initiatives never cease. Led by our many excellent faculties, staff and students, our motto remains that "Learning should never stop".

Together with our students, communities and international partners, we facilitate solutions that shape and advance our future. In our role as a world-class university, we believe that excellence in teaching provides a means of engendering transformation in the lives of students.

Come and be part of our transformative education.

Best Regards,

Prof. (Dr.) Savita Sengar
Vice Chancellor

Recognitions & Accreditations

Jharkhand Rai University (JRU) has been established under “Jharkhand Rai University Act, 2011” by Jharkhand State Legislature as per section 2(f) of UGC Act 1956. JRU is an ISO certified University, (ISO 9001:2015) and the only private University in the state of Jharkhand which is Accredited by NAAC.”



**Govt. of
Jharkhand**



**ज्ञान-विज्ञान विमुक्तये
UGC**



NAAC



**Association of
Indian Universities**



**Pharmacy Council
of India**



**Bar Council
of India**

Achievements & Awards



Jharkhand Rai University, Ranchi awarded "Best Private University for Women Empowerment" in the year 2013 in the National Education Excellence Award organized by The Associated Chambers of Commerce and Industry of India (ASSOCHAM) at New Delhi.



Jharkhand Rai University secured "Best Private University" award from The Associated Chambers of Commerce and Industry of India (ASSOCHAM), Ranchi in the year 2014.

Jharkhand Rai University is the member of Association of Indian Universities (AIU) & also an ISO certified University



Guru Shiksha Samman - 2015 for "Outstanding Contribution in the Field of Education".

Secured
12th position
in All India Ranking of Active
Local Chapters for Swayam
MOOCs & leading in the State of
Jharkhand with 145 students in
Elite category, 7 students in Gold
Category & 76 students in Silver
Category.



JRU is selected amongst
5 Institutes in Jharkhand as a mentee to
promote Innovation & Entrepreneurship
and further establish an incubation
centre under the mentorship of IIT
Dhanbad by IIC, Ministry of Education,
Govt. of India

Achievements & Awards

Proud moment for Jharkhand Rai University

The University has been invited by the
Ministry of Education
to witness **Republic Day Parade 2022**
from the
Prime Minister's Box
at Rajpath, New Delhi



Guru Shiksha Samman - 2016
for "Outstanding Contribution in
the Field of Education".



"Best Private University with
Academic Excellence in Jharkhand"
by Worldwide Achievers and India
Today Group in the year 2017.



"Best Private University for
Industry Interface 2017" by
News India Group in the Year
2017.



"Best Private University with
Academic Excellence in Jharkhand
for Industry Interface"
by CEGR, in the year 2017.



Jharkhand Rai University received
the award for "The Best Private
University of the Year (East)
by ASSOCHAM in the National
Summit on Excellence in
Education 2017".

Jharkhand Rai University is amongst the top
three Institutes in Jharkhand to receive the
highest **4-star rating** in the Annual Performance
of Institution's Innovation Council 3.0 (2020-21)
by Ministry of Education, Govt. of India



Infrastructure & Facilities

Jharkhand Rai University has its own campus spread in an area of approximately 20 acres at Raja Ulatu, Namkum, Ranchi. In this campus, the academic block, which includes classrooms, labs, seminar halls, workshops, library and computer lab for the students, is spread over one lakh sq. ft. area.

The University provides safe and secure hostel facility to students. The hostel block is built over 50,000 sq. ft area. There are separate hostel facilities for boys and girls. Daily bus services are provided to and from campus making it easier for students to commute.



Classrooms and Seminar Hall:

Well-lit and ventilated classrooms at the University provide students an encouraging and conducive environment for learning and focusing. All the classrooms are perfectly designed with comfortable seating arrangements. In order to make our students competitive we regularly organize national and international conferences, seminars and workshops in the campus. We have a well equipped seminar hall that has been specifically designed for hosting such events.



Infrastructure & Facilities

Computer Lab:

The Computer Lab at the University has more than 120 desktops. All the desktops have seamless internet access. We provide a network of latest computers, adequately matched and supported by a host of printers, scanners, modems and other peripheral devices. Staff Members & students using laptops and smart phones can also benefit from Wi-Fi facility available in the campus.



Internet Connectivity / Wi-Fi Facility

The University has a 100 Mbps dedicated fiber optics connectivity. Our campus is Wi-Fi enabled and the connectivity is available to all the students and staff members using laptops / smart phones.



Hostel Facility :

We at JRU believe in providing our students with a friendly ambience which fosters their overall development, both in terms of learning and development. our aim is to help students not only to live comfortably, but also to balance their time between studies and extra-curricular activities in a better way.

The University provides hostel facility for both boys and girls. presently it is capable of serving about 200 boys & 200 girls inside the campus in apartments, ensuring best social life and security for students. The hostel rooms are equipped with 24 hours of power back up and security.



Library:

The University's state-of-the-art library is digital & accessible 24x7 via internet. It is equipped with Internet browsing facilities and a reading room as well. Library serves as the backbone to all the academic activities at our campus. The library at Jharkhand Rai University houses more than 25,000 textbooks and a good number of reference materials, journals, magazines, periodicals, e-books and audio-videos materials.

Infrastructure & Facilities

Students' Mess & Cafeteria

Students' cafeteria is a place where we provide our students with nutritious and healthy food. The dining space has a seating capacity for more than 150 students at a time and provides students a comfortable and hygienic environment. Every student, especially the underprivileged one's can enjoy the canteen facilities at highly subsidized rates.



The cafeteria is spread across 3500 sq. feet area in the ground floor of Academic block for catering to students and the staff members. It is a hang out zone for the students where they relax & unwind and enjoy delicious meals. Our menu offers an extensive selection of everyday favourites and food items like sandwiches, Indian snacks, fruit juices, cold drinks, milk, eggs and beverages including tea and coffee. The cafeteria is operational from 8 AM to 8 PM.



Common Room :

At Jharkhand Rai University we have a common room for both boys & girls, which is quite spacious, well-ventilated and airy. Students are provided with different kinds of recreational activities.

There is a display board where students can express their thoughts through various forms like drawing, painting, poems, stories, etc. The girls' common room is equipped with sanitary dispenser machine & incinerator.

Common room is a place in the University campus that provides a relaxing atmosphere for socialising, enhancement of knowledge pool and recreation.

PLACEMENTS OVERVIEW

75.48% Placement

achieved in session 2020-21

95.62% Placement

achieved in session 2021-22

STAR PLACEMENTS



ASHA KUMARI
BCA



SUBRATO CHAKRABORTY
Mining Engg.



NANDITA KUMARI
B.Tech Computer Science



GAUTAM KUMAR THAKUR
MBA



FAISAL RAZA
BCA



SURYA KUMARI LAMA
BBA



ARUN KUMAR
BBA



SAYAN MANDAL
BCA



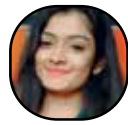
LAXMI KUMARI SANDLIYA
B.Sc Agriculture (Hons.)



AMAN VISHWAKARMA
BCA



KHUSHBOO KANDULNA
MBA



SHIVANGI SHRIVASTAV
BCA



SELECTIONS & PLACEMENTS



Recruitment Partners

TCS
INFOSYS
WIPRO
BYJU'S
AIRTEL
HDFC
AMBUJA CEMENTS
AMDOCS
CAPGEMINI
ACCENTURE
AYUDA
RELIANCE SMART
SHOPPERS STOP
JCAPCPL
DEHAAT
OSAM DIARY
PATANJALI
JUSCO LIMITED
RALSON (INDIA) LTD
KALAM ACADEMY
INDIAMART
TATA AUTOCOMP PVT. LTD.
ALLIANCE TYRE GROUP
MOREISH FOODS LIMITED
ESSEL PROAPCK PVT LTD
EPIROC INDIA LTD
MARELLI MOTHERSONS
RIZITEK INDIA PVT. LTD.
EEFCO METALS AND POWDERS PVT. LTD.
KOMBO CONSTRUCTIONS PVT LTD
PASA RESOURCES PVT. LTD.
NATHCORP PVT. LTD.
ALLIED INSTRUMENTS AND THERMOCOUPLES
GUPTA POLYTUBES PVT. LTD.
S.S SYSTEMS PVT. LTD.
SAURAT AUTO TECH PVT. LTD.
MULTITECH AUTO PVT. LTD.
MAL METALLIKS PVT. LTD.
NIKS TECHNOLOGY PVT. LTD.
YOGIK TECHNOLOGIES PVT. LTD.
ALCALAB PVT. LTD.
FLEET GUARD FILTERS PVT. LTD.
IT SCIENT PVT. LTD.
PREMSONS MOTOR UDYOG PVT. LTD.
YAZAKI INDIA PVT. LTD.
NARULA INFRASTRUCTURE PVT LTD
BUCK SOFTECH PVT. LTD.
STEEL STRIPS WHEEL LIMITED
BRIZTECH INFOSYSTEMS PVT. LTD.
ITRINOME PRIVATE LIMITED
SEM TECHNOLOGIES INDIA PVT. LTD
DPS EASTERN PRIVATE LIMITED
INLAND POWER LIMITED
CYPRESS AUTO PVT. LTD.
WABCO INDIA LIMITED
JOYGURUKICO INDIA PVT. LTD.
ARF DESIGN PVT. LTD.
ACC CEMENT LIMITED
SHIVAM IRON AND STEEL CO. LTD.
RANCHI INFORMATION TECHNOLOGY CENTRE PVT LTD

and many more...

Glimpses of Convocation

The **3rd Convocation Ceremony** of Jharkhand Rai University was held on 11th April, 2022.



The **2nd Convocation Ceremony** of Jharkhand Rai University was held on 20th February, 2020.



The **1st Convocation Ceremony** of Jharkhand Rai University was held on 8th April, 2018.



Programs Offered

Department of Pharmacy

Bachelor in Pharmacy (B.Pharm)#

Eligibility : 10+2 In Science from any recognised board.

Duration : 4 Years

Diploma in Pharmacy (D.Pharm)

Eligibility : 10+2 In Science from any recognised board.

Duration : 2 Years

#Lateral Entry Available

Department of Physiotherapy

Bachelor of Physiotherapy (BPT)#

Eligibility : 10+2 In Science (PCB) from any recognised board.

Duration : 4 Years 6 Months

#Lateral Entry Available

Department of Agriculture

B.Sc. (Hons.) Agriculture

Eligibility : 10+2 In Science from any recognised board.

Duration : 4 Years

M.Sc. Agriculture

Eligibility : B.Sc. (Agriculture) or equivalent from any recognised University.

Duration : 2 years

Department of Law

BA LLB

Eligibility : 10+2 from any recognised board.

Duration : 5 Years

LLB

Eligibility : Graduation from any recognised University.

Duration : 3 Years

LLM

Eligibility : LLB from any recognised University.

Duration : 2 Years

Department of Computer Science & IT

BCA

Eligibility : 10+2 from any recognised board.

Duration : 3 Years

MCA

Eligibility : Graduation from any recognized University.

Duration : 2 years

B.Tech in Computer Science & Engineering#

Eligibility : 10+2 In Science (PCM) from any recognised board.

Duration : 4 Years / 3 Years

#Lateral Entry Available

Department of Management

BBA

Eligibility : 10+2 from any recognised board.

Duration : 3 Years

MBA

Eligibility : Graduation or its equivalent from any recognised University.

Duration : 2 Years

Department of Mining Engineering

B.Tech in Mining Engineering#

Eligibility : 10+2 In Science (PCM) from any recognised board.

Duration : 4 Years / 3 Years

Diploma in Mining Engineering#

Eligibility : 10th from any recognised board.

Duration : 3 Years / 2 Years

#Lateral Entry Available

Department of Nursing

B.Sc Nursing*

Eligibility : 10+2 In Science (PCB) from any recognised board.

Duration : 4 Years

GNM*

Eligibility : 10+2 In Science (PCB) from any recognised board.

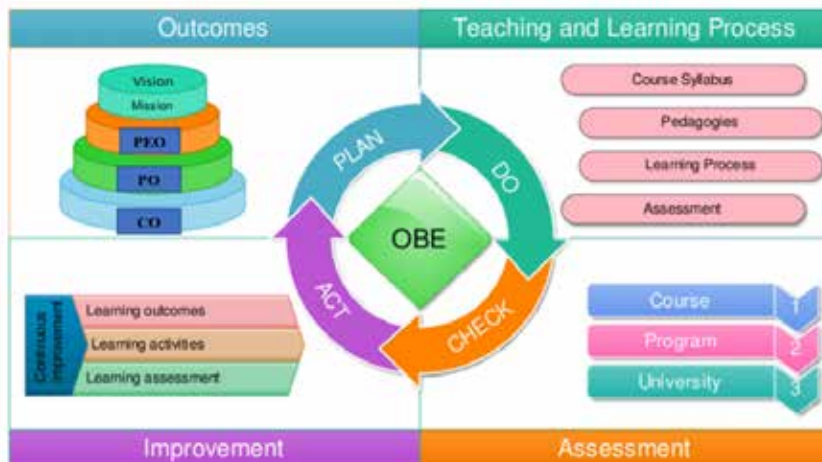
Duration : 4 Years 6 Months

*Subject to Approval

Teaching Pedagogy

The spirit of innovation, modernization and student centric teaching – learning approach blended with strong Mentorship Program is the cornerstone of academics at Jharkhand Rai University. The focus on building skills, value system and character are the integral part of Jharkhand Rai University academic system. The University focuses on holistic education ecosystem, where the goal is not to make students just work-ready but also good human beings.

Students in today's dynamic environment should have the ability to collaborate across disciplines and to apply knowledge in parallel areas of expertise. University emphasizes on transforming from traditional teaching to Outcome Based Education(OBE). The educational framework is based on desired outcomes and defined goals to be achieved by the students. The learning activities are customized so that they challenge more able students and also, support those who need extra guidance.

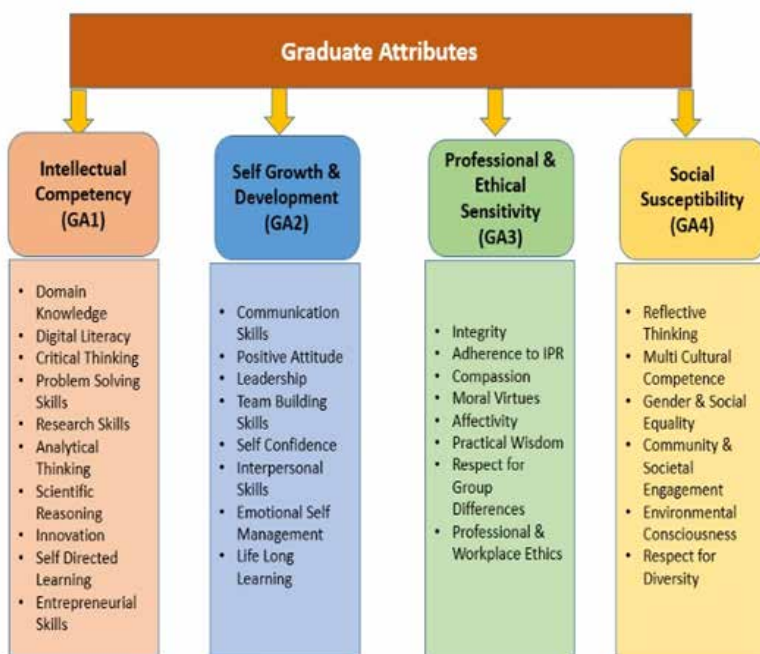


The Learning Outcome of each course is stated using Bloom's Taxonomy which clearly defines the knowledge and skill to be acquired by the student on the completion of the course. The assessment of students (Continuous Internal Assessment & End Semester Examination) are based on the learning outcomes defined for each course & also ensures the consideration of each level of Bloom's Taxonomy.



Every graduate of the University will be developed to possess the following attributes:

1. Intellectual Competency
2. Self-Growth & Development
3. Professional & Ethical Sensitivity
4. Social Susceptibility

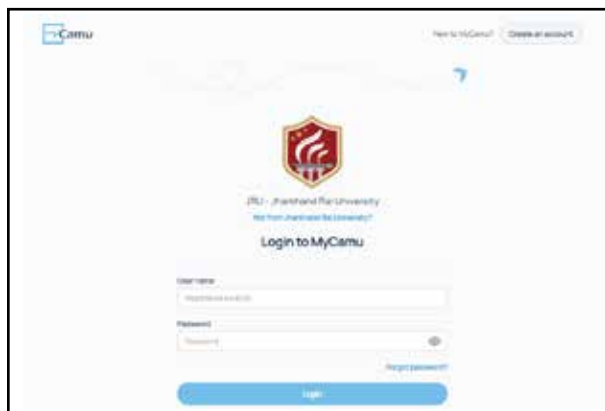


Digital Initiative

JRU Moodle Platform

Jharkhand Rai University has implemented the blended teaching learning pedagogy through its own dedicated online learning management system Moodle (www.jrumoodle.in).

All the academic activities (Lesson Plan/Attendance/ study resources/ Assignments/ Continuous Internal Assessments (CIA)) are performed through JRU-Moodle Platform.



CAMU Web and Mobile Application University Management Solution (ERP)



Digital Initiatives by JRU

In tune with the Digital India program, a flagship program of the Government of India, JRU has started many plans to make University digitalized. So far, we have adopted and have taken many digital initiatives, which ma-

jorly include MOOCs' Swayam Prabha, INFLIBNET, Registration Module, Online Admission process, Examination Form & online result, other academic activities. Jharkhand Rai University, Ranchi has adopted credit transfer through MOOCs courses from SWAYAM Platform involving Credit Transfer Mobility as per UGC Credit Framework Regulations 2016. It focuses on "Awareness, Adoption & Promotion" of the MOOCs Courses. Students can earn upto 20% of their credits through MOOCs courses from SWAYAM.

Library is fully automated - Integrated Library Management System (ILMS)

Jharkhand Rai University Library is automated with open-source integrated library software KOHA (Version -19.05).

It's hosted at our in-house service and is accessible by both internal network and external network as well as through mobile network. Library user can access the library bibliographic data, issue/re-issue book, check due date book, check their fine, suggest new book, can hold book through OPAC etc online. All subscribed and open access e-resources are accessible through our University website or via library portal.



NAD - DigiLocker (Digital Document Wallet)

As per the recommendations of University Grants Commission (UGC), Jharkhand Rai University has joined the National Academic Depository - DigiLocker System. NAD- DigiLocker is Govt. of India's platform for issuance & verification of documents & certificates. It's a secure

platform for storage, sharing and issuance of documents and certificates, making service delivery to the students convenient. Students and their prospective employers can access the records anytime and from anywhere. Now, the University is working on its plan to upload the mark sheets of the pass out and the existing students on the DigiLocker platform.

As per the National Education Policy 2020, Jharkhand Rai University has joined the Academic Bank of Credits (ABC) initiative to facilitate the academic mobility of students with the freedom to study across the Higher Education Institutions in the country, under Multiple entry and exit scheme.



Learning Beyond Classroom

Jharkhand Rai University offers learning opportunities that extend beyond classrooms. Under this framework, the students encounter authentic problems, construct novel hypotheses, test for real solutions, and interact with others to make sense of the world around them. Well-planned, supervised and assessed experiential learning programs has been developed to stimulate academic inquiry by promoting interdisciplinary learning, civic engagement, cultural awareness, leadership, and other professional and intellectual skills.

The university provides cutting-edge holistic learning to develop promising youngsters into leaders of tomorrow with globally relevant, future-ready and actionable intelligence. An effective learning environment is provided to students which meets the needs of all kinds of learners. The objective is to make each student proficient in synthesizing/analyzing information and be ethical, socially responsible and just, when making decisions.

Methods adopted for extending Learning Beyond Classroom:

We at Jharkhand Rai University emphasize on all round development of students. Keeping this in mind we provide students with opportunities that help them in getting familiar with know-how of the industrial world. Such a kind of practical knowledge not only enhances their academic information but also improves their professional skills.

Industry Visits:

We ensure that our students become industry-ready professionals and therefore organize regular industry tours and visits. The purpose of conducting these tours is to give students a practical insight into the functionality of an organization. These industrial visits and tours expose the students to the real world thus enriching their knowledge and experience to a great extent.



Industry visit to PARAS HEALTHCARE



Expert Talk by Expert - Mr. Suryanshu Verma, AVP, HDFC Bank Ltd

Guest Lectures :

We organize Guest Lectures and Seminars for our students on a regular basis. Industry veterans and reputed academicians are invited to deliver lectures on various topics. They interact and share their insights and experiences with the students. Through these lectures and interfaces students get a chance to learn innovative methods and approaches for overcoming professional problems and challenges.

Conference :

Students of JRU get ample opportunities to present their ideas through papers at various conferences. Speaking at a conference builds their confidence, develops their communication skills and shows a student's initiative. This prepares them for corporate boardrooms. Conferences are a great way to get feedback on ideas and learn from others.



Paper Presentation by Student of Pharmacy at ETIBPS '23 Conference



Educational Tour of B.Sc.(Hons.) Agriculture Students to Solan, Himachal Pradesh

Educational Tour:

Education tours are organised for students to develop their mindset, outlook, personality traits, managerial and entrepreneurial skills. Students get first hand experience when they are on field trips. They also develop team building skills while traveling as a group. It builds their sense of community.

Workshop:

Frequent workshops are a regular part of the curriculum at JRU. In these intensive educational workshops, students get opportunities to advance their knowledge on new developments in their fields of study. Workshops are a great way to learn practical skills, techniques and ideas in a short time.



Students of BPT participating in the Workshop at RIMS

Photo Gallery

tarang - Annual Fest



abhiwadan Fresher's Day



Jalsa Dandiya Eve



Spardha - Sports Day

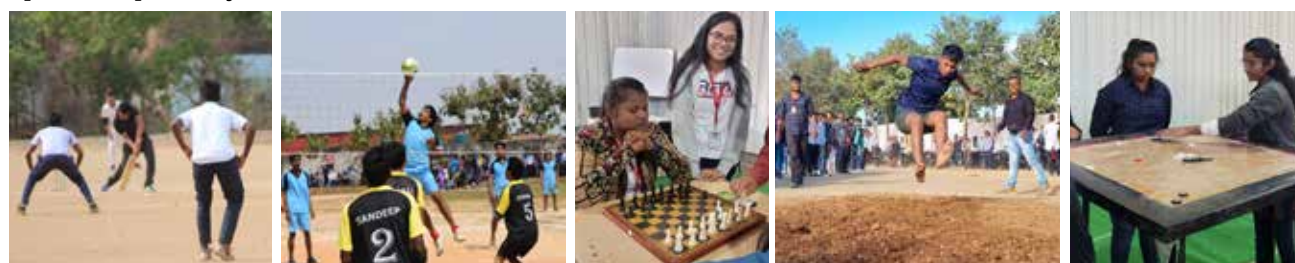


Photo Gallery

छरररर - Inter University Fest



National Seminar

Teachers Day

Blood Donation Camp



ADIEU - Farewell Party



Women's Day

Yoga Day



Clubs & Events



Cultural events play a very important role in shaping the personalities of young students. They add zest, zeal and energy to a student's life. We at Jharkhand Rai University, organize various events and activities that help our students to broaden their view and also improve upon their talent. Through these events our students not only learn to overcome their fears but also try to sharpen their mind and skills. Tarang (The Annual Cultural Fest), Abhivadan..A New Beginning (The Fresher's Party) and Goonj(Dandiya Eve) are to be named amongst a few.





twitter.com/JhRaiUniv



facebook.com/jharkhandraiuniversity

**Jharkhand Rai University,
Raja Ulatu, Namkum, Ranchi - 834010**